

HAPPY NEW YEAR

Year from the team at Auckland Breast Centre.

We hope that you have had a good break after what was a difficult year for many on many different fronts. There is renewed optimism about now and we look forward to a great 2011.

For ABC, 2011 sees the introduction of a new website with a blog and

forum, the extension of our lymphoedema services and family history clinics. There will be further developments at the Ormiston site with another surgeon visiting giving increased flexibility in patient appointment times, and also the introduction of our Golden Oldies programme.

“BUT DOCTOR, I’M 70 NOW SO I DON’T NEED MAMMOGRAMS ANYMORE...”



This is a conversation I am sure you have all had. It is common misconception brought about by the age limits of the BSA programme which finishes free screening when a woman turns 70 years of age.

15-20 % of breast cancers are diagnosed in women over 70 years so it is an issue for patients and doctors. With an increasing number of people living longer, there is a dilemma regarding how best to manage the care of breast cancer patients, taking into account both their co-morbidities and their account their quality of life. Multiple studies support the use of mammography (the gold standard for breast cancer screening) in older women as they are more likely to be diagnosed with an earlier stage disease and therefore are less likely to die from the disease. One study looked at the 75-84 year age group and found the breast cancer specific mortality to be two fold higher in women who were not actively screening. Furthermore given the good health of many in this age group, the breast cancer treatments themselves are well tolerated including surgery, radiotherapy and hormone manipulation.

There is clear evidence for the ongoing mammographic screening of women over 70 years of age which should stop when the woman is no longer a surgical candidate for breast cancer treatment.

www.aucklandbreastcentre.co.nz

- Auckland Breast Centre
- 217 Shakespeare Rd • Milford
- PO Box 31238 • Milford • Auckland 0741
- Ph: (09) 488 9179 • Fax: (09) 486 0410
- e-mail: info@aucklandbreastcentre.co.nz

- Auckland Breast Centre @ Ormiston
- 125 Ormiston Road • Botany Junction
- PO Box 217096 • Botany Junction • Auckland 2164
- Phone: (09) 265 0274 • Fax: (09) 265 0273
- e-mail: ormiston@aucklandbreastcentre.co.nz

WE ARE INTRODUCING OUR SUPER GOLD RATE

SuperTMGold

15%
DISCOUNT

We are introducing our Super Gold rate in recognition of the need for women over 70 years of age to be in regular screening when they are no longer eligible for the free BSA programme. Eligible women will receive digital mammography at a 15% discount from the advertised price. This is available at both Milford and Ormiston sites.

STRESS AND BREAST CANCER PROGRESSION IN MICE

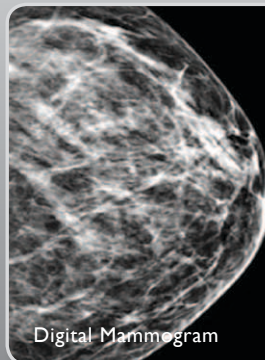


There is anecdotal evidence for the role of stress in breast cancer progression in women. Recent work from UCLA Jonsson Comprehensive Cancer Centre have found that stress is reprogramming the immune cells (macrophages) to be permissive in cancer progression in mice models. The breast cancer progression was 30- fold in stressed mice compared to

mice that were not stressed. Stress did not cause progression of the primary cancer but progression of the metastases which could be prevented by the administration of a beta- blocker. The team identified that the beta blocker works by interrupting the signals from the sympathetic nervous system to the macrophages and prevents then infiltrating the tumour area and causing inflammation which provides the cancer cells with the ideal environment to spread.

TESTIMONY

Thank you for your care and attention over the past few weeks. You will never know how appreciative I am of your willingness to be available for all those questions which I had prior to and after surgery. I am fortunate to have had a surgeon of your caliber but your personal manner and care of your patient is a huge part of the healing process.



Digital Mammogram



Film Mammogram

Screening Mammography
what is our recommendation?
ANNUALLY FROM 40 YEARS

www.aucklandbreastcentre.co.nz

- Auckland Breast Centre
- 217 Shakespeare Rd • Milford
- PO Box 31238 • Milford • Auckland 0741
- Ph: (09) 488 9179 • Fax: (09) 486 0410
- e-mail: info@aucklandbreastcentre.co.nz

- Auckland Breast Centre @ Ormiston
- 125 Ormiston Road • Botany Junction
- PO Box 217096 • Botany Junction • Auckland 2164
- Phone: (09) 265 0274 • Fax: (09) 265 0273
- e-mail: ormiston@aucklandbreastcentre.co.nz